

TEMSA AVENUE NEO 9e



CITY FLOWS WITH
AVENUE NEO 9e

temsa.com





*Images shown may feature optional equipment and accessories not included in the standard model.

MODERN DESIGN

AVENUE NEO 9e



Thanks to the new front and rear design, Avenue Neo 9e brings a modern and assertive look to urban mobility.



Digital Driver Information Display

With its functional layout and driver-centric positioning, the digital display ensures ergonomic access to all key functions and controls.



Fully Ergonomic Driver Area

Offers semi-closed and fully-closed cabin options that help reduce fatigue and protect against vandalism.

* Images shown may feature optional equipment and accessories not included in the standard model.

COMFORTABLE AND ACCESSIBLE FOR BOTH CITY AND INTERCITY ROUTES

STEP INTO THE AVENUE NEO 9e AND DISCOVER
A NEW STANDARD OF COMFORT.

AVENUE NEO 9e



The refreshed interior design with modern and easy-to-clean seating layout creates a comfortable and pleasant interior ambiance.



Offering 30+3(Foldable) seats with wide interior space Avenue Neo 9e is designed to meet the demands of modern city transportation of every region.



The new CO₂-based air conditioning unit offers powerful cooling/heating performance while supporting a cleaner, more sustainable future.

*Images shown may feature optional equipment and accessories not included in the standard model.

RELIABLE AND **EFFICIENT**

Maximum
Performance

Maximum
Range

Minimum
Charging Time



Delivering class-leading range and outstanding efficiency, Avenue Neo 9e redefines city transport while ensuring a smooth and confident driving experience in every condition.



TM4 Sumo MD



8x48 kWh TemsaTech Batteries
600km Range



300 kW Plug-in Charging

*Range may vary depending on many parameters such as battery warranty, driving styles, topography, outside temperature, air conditioning systems, etc.

* Images shown may feature optional equipment and accessories not included in the standard model.



CLASS-LEADING PASSENGER CAPACITY

Designed to move more people efficiently, Avenue Neo 9e redefines urban mobility with its passenger capacity that can reach up to 75.



OUTSTANDING RANGE

Equipped with advanced battery technology, Avenue Neo 9e provides an exceptional driving range up to 600 km. Whether navigating dense city traffic or extended suburban routes, Avenue Neo 9e offers reliability and endurance.

INTERIOR

Avenue Neo 9e embodies a design philosophy that is lean in structure, minimalistic in form, and deeply natural in its connection to the urban environment. Ergonomic handrails, wide aisle space and new side windows enhance safety and flow. Every detail from modern seats to refined surface has been selected to elevate passenger experience on every journey.



EXTERIOR

The exterior design blends strong urban character with contemporary elegance, delivering a bold presence on the road. Redesigned front and rear sections reflect a dynamic and confident identity, while clean body lines emphasize practicality and flow. Fully LED lightings enhance visibility and give the bus a modern signature look, day and night.





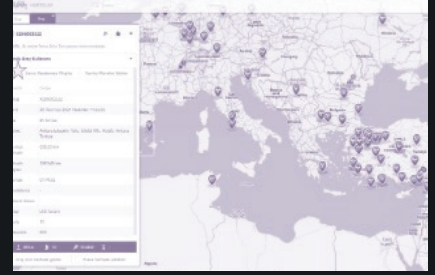
R66 Body

The robust body structure of Avenue Neo 9e, ensures passenger protection and structural integrity in both Class 1 and Class 2 options.



Hybrid Wheelchair Ramp

Wheelchair Ramp with both manual and electric operation functions, Avenue Neo 9e ensures seamless accessibility for all passengers.



Telematic System

Enables real-time vehicle monitoring and diagnostics to support efficient fleet management and maximize uptime.



Digital Mirror

Enhances visibility and reduces blind spots in all conditions.



3-Point Seatbelt

Provides improved passenger safety for intercity routes at higher velocity.



Alternative Charge Plug Positions

Offering flexible plug-in locations, Avenue Neo 9e can meet every region's needs, with options available for front right, front left, and rear right plug-in positions.



Inward Pneumatic Doors

Provide quick and reliable opening for smooth boarding.



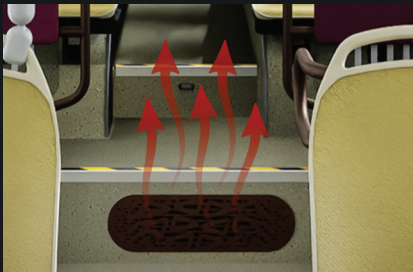
Outward Electric Door

Maximize interior space while enhancing passenger safety at every stop.



2-3 Door Options

With 2-door and 3-door configurations, it offers layout flexibility tailored to the requirements of different routes and passenger densities.



Diesel / Electric Preheater Options

Ensure cabin comfort and component protection even in the coldest conditions.



High Gradeability

With up to 21.9% gradeability, Avenue Neo 9e provides confident traction and climbing on steep roads.



Liquid Cooling Battery

Ensures optimal battery thermal management for extended range, consistent performance and longer battery life under all conditions.



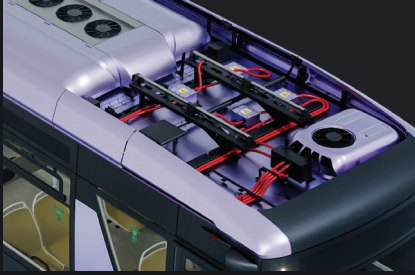
Electromagnetic Lock

Advanced locking technology for enhanced safety, seamless operation, and premium build quality.



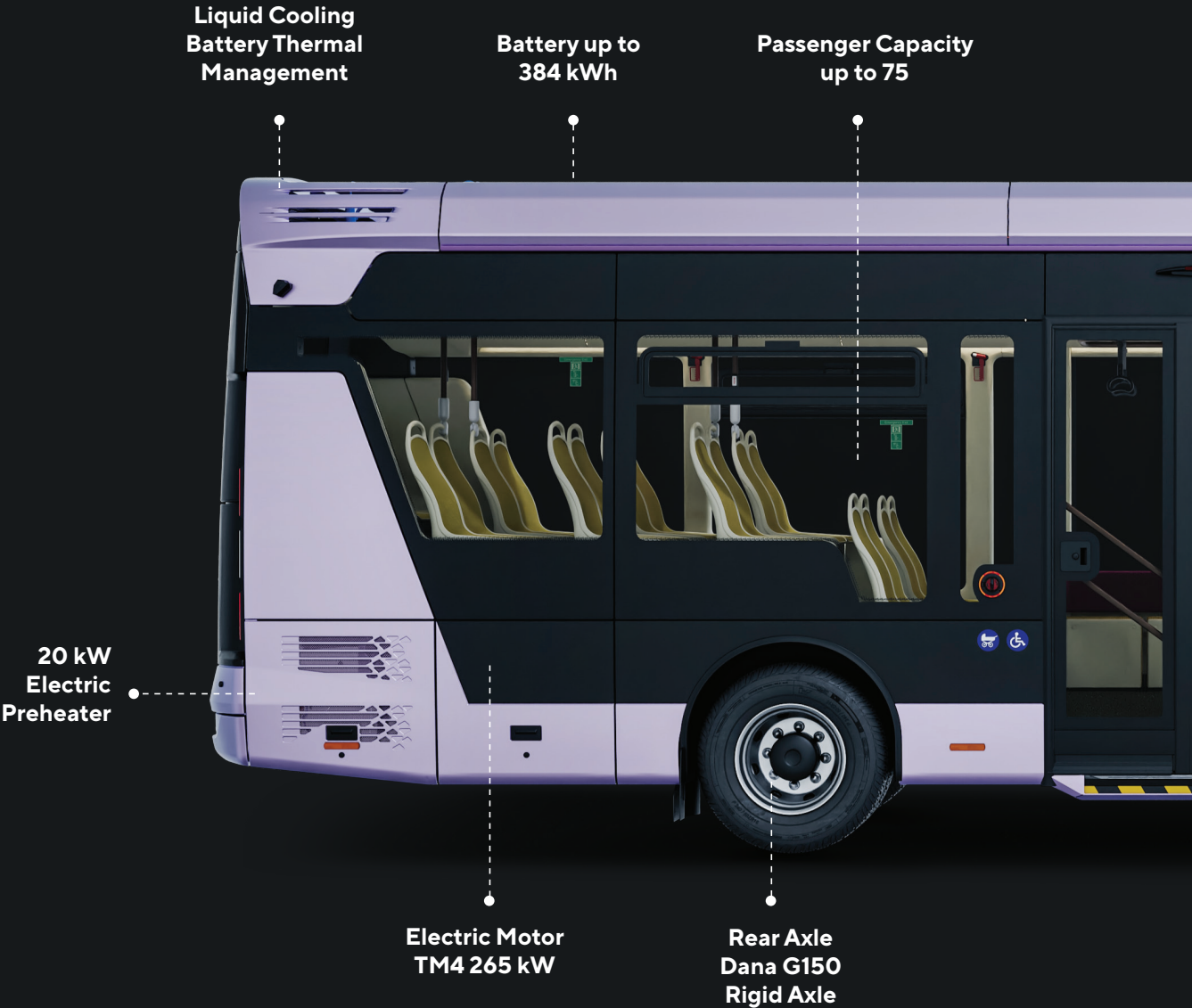
Fully LED Lighting

Improves road visibility, energy efficiency and vehicle aesthetics.



Inverted Pantograph

Designed for fast and efficient overhead charging, the inverted pantograph system enables high-power connection.



Liquid Cooling
Battery Thermal
Management

Battery up to
384 kWh

Passenger Capacity
up to 75

20 kW
Electric
Preheater

Electric Motor
TM4 265 kW

Rear Axle
Dana G150
Rigid Axle



Two Piece Windshield

Simplifies maintenance, supports more efficient after-sales operations.



CO₂ Air Conditioner Option

Offers an eco-conscious climate solution with zero environmental compromise.



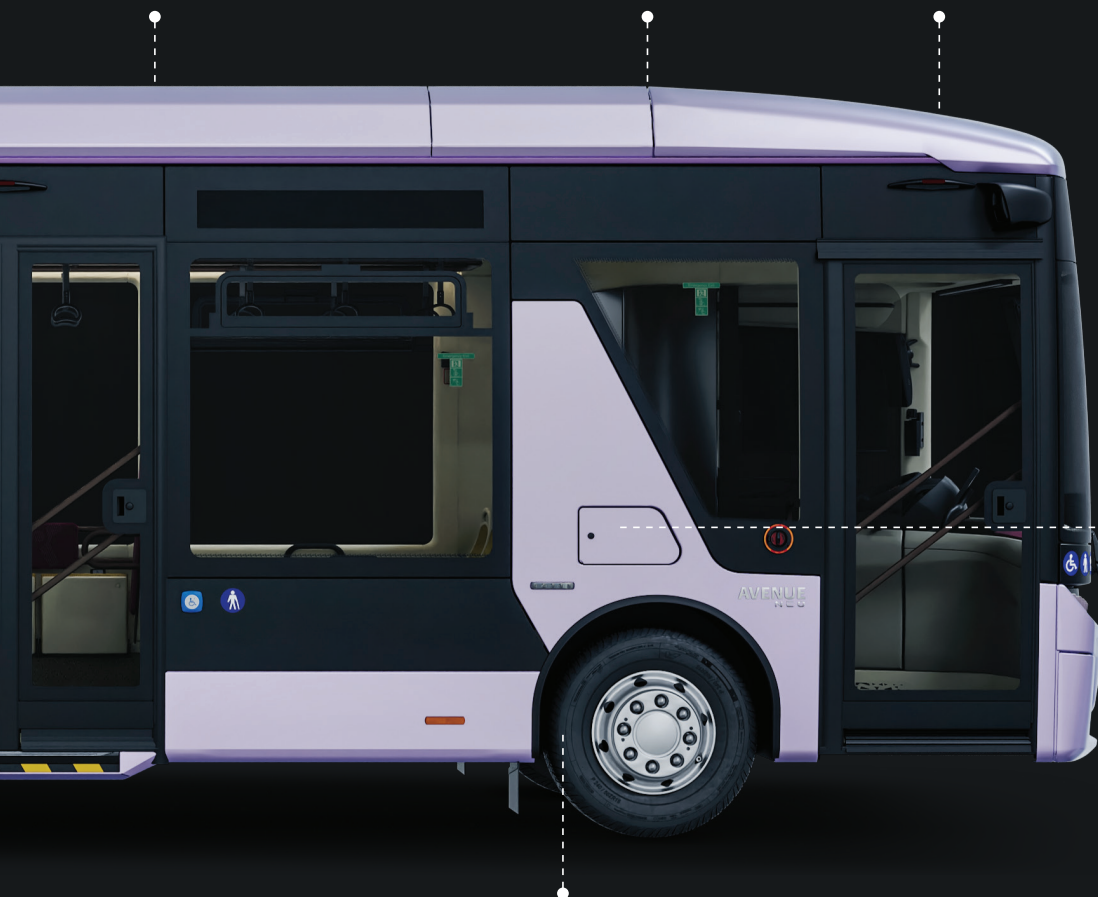
Electrical Hanging Mirrors

Enhance driver visibility and offer added convenience during operation and parking.

Air Conditioner
33 kW
Cooling Capacity

Inverted Pantograph
Option

Range up to
600 km



Charging
1 hour 15 minutes
with 300 kW DC

Front Axle
ZF RL 55 EC
Independent Axle

ADVANCED SAFETY

THE NEW AVENUE NEO 9e
PLACES SAFETY AT THE CORE OF
ITS DESIGN FOR PASSENGERS,
DRIVERS, AND PEDESTRIANS.

Intelligent Speed Assistance (ISA)



Continuously monitors vehicle speed in line with current traffic regulations. Using cameras onboard, it detects posted speed limits and alerts the driver in case of an exceedance.

Driver Drowsiness and Attention Warning (DDAW)



By tracking driver behavior, the DDAW system identifies early signs of fatigue or loss of concentration and actively encourages timely rest through visual and audible warnings.

Moving Off Information System (MOIS)



As the vehicle begins to move front-mounted camera system monitor the area ahead, warning the driver if pedestrians or cyclists are detected.

Emergency Stop Signal (ESS)



During emergency braking, ESS activate flashing brake and hazard lights to warn vehicles behind and enhance on-road safety.

Blind Spot Warning System (BSIS)



Thanks to cameras positioned on the sides, Avenue Neo 9e detects blind spots, enhancing safety during turns.

Rear View Monitoring System (REV)



Enhances driving safety by displaying the rear of the vehicle on the digital cluster via a high-resolution camera.

Tire Pressure Monitoring System (TPMS)



Continuously monitors tire pressure and alerts the driver in case of pressure loss, ensuring optimal comfort and vehicle control.

Vehicle Cyber Security (VCS)



Protects the vehicle's electronic systems against cyber threats, ensuring the integrity of onboard data and digital components.

Alcohol Interlock Preparation (ALP)



Avenue Neo 9e can be equipped with alcohol interlock system to ensure the driver is tested before the vehicle can be started.

Lane Departure Warning System (LDWS)



Front camera accurately detects lane markings even in low light. With calibration, it warns the driver in case of lane departure, helping the vehicle stay safely within the lane.





DIMENSIONS AND WEIGHTS

Length	9.500 mm
Width	2.400 mm
Height (incl. Air conditioner)	3.250 mm
Wheelbase	4.600 mm
Front Overhang	2.060 mm
Rear Overhang	2.840 mm
Turning Radius	7.070 mm
Approach/Departure	9°/8°
Seating Capacity	Class I: 30 Class II: 33*
Gross Vehicle Weight	15.700 kg

AXLES

Front Axle Type	Independent
Front Axle Capacity	5.750 kg
Rear Axle Type	Rigid
Rear Axle Capacity	10.700 kg

POWER

Type	TM4 Sumo MD
Maximum Motor Power	265kW
Maximum Torque	276ONm
Gradeability	21.9%
Maximum Speed	90km/h

BRAKES

ABS	Standard
EBS	Standard
ASR	Standard
Temporary Bus Stop	Standard
Electronic Parking Brake	Standard
ESC (Electronic Stability Control)	Optional

BATTERY

Type	Li – Ion NMC
Battery Capacity	192/288/384kWh
Charging Technology	CCS2
Front Right Charge Plug	Standard
Front Left Charge Plug	Optional
Rear Right Charge Plug	Optional
Front Left and Right Plug	Optional
Liquid Cooling BTMS	Standard
Charging Technology 2	Inverted Pantograph
Charging Time (300 kW DC)	1 hour 15 minutes
Location	Rear and Roof

RIMS & TIRES

Rim	7.5 x 19.5
Rim Cover	Optional
Tire	265/70/R19.5
Steel Rim	Standard
Aluminum Rim	Optional

ELECTRICAL SYSTEM

System Voltage	24V
Battery	2x12V 180 Ah

WINDOWS AND CLIMATIZATION

Single Glazed Side Windows	Standard
Double Glazed Side Windows	Optional

Single Glazed Rear Window	Standard
Double Glazed Rear Window	Optional
Air Conditioner	Standard
CO ₂ Air Conditioner	Optional
Defroster	Standard
AC Defroster	Optional
Electric Preheater	Optional
Diesel Preheater	Optional
Diesel Preheater Tank Volume	45L
Heat Blower First Door Area	Standard
Heat Blower Aisle	Standard
Heat Blower Rear	Optional

EXTERIOR AND BODY

Body Lifting	Standard
Body Side Kneeling	Standard
Body Kneeling	Standard
ESAC	Standard
Pneumatic Inward Doors	Standard
Electric Outward Door	Optional
2 Doors	Standard
3 Doors	Optional
Led Lighting Group	Standard
Fog Lamp	Standard
Solid White Exterior Paint	Standard
Metallic Exterior Paint	Optional
Pipe Type Side Mirrors	Standard
Coach Type Mirrors	Optional
Camera Mirrors	Optional

SAFETY

Fire Extinguisher 1x6kg	Standard
Safety Hammer	Standard
Central Test Point	Standard
Low Voltage Warning	Standard
Engine Room Lid Open Warning	Standard
Circuit Sperator on Battery	Standard
Reverse Gear Buzzer	Standard
AVAS System	Standard
Alcoholmeter	Optional
Wheelchair safety belt	Standard
Wheelchair backrest	Standard
Wheelchair fixing equipment	Optional
Electromagnetic Lock	Standard
3 Point Seatbelts	Optional

OTHER EQUIPMENTS

One Pedal Driving	Standard
Manual Disabled Ramp	Standard
Hybrid Disabled Ramp	Optional
Skibox preparation	Optional
Parcel Rack (Class II)	Optional
Electric Sunvisor	Optional
Swivel Driver Seat	Optional
Telematic System	Standard

*without wheelchair area

**Temsa Roadside Assistance**

TEMSA After Sales teams are with you whenever and wherever you need. The fastest and most effective solutions are available 24/7.
+31 546 543 295

Temsa Factory

Sarıhamzalı Mahallesi, Turhan Cemal Beriker Blv.
563/A, 01110
Seyhan/Adana /Turkey
+90 322 441 02 26

Temsa France

Route de Bitche, 67340 Ingwiller
+33 3 88 89 40 16

TEMSA Deutschland GmbH

TEMSA Deutschland GmbH Buchäckerring 43,
74906 Bad Rappenau
+49 7066 911 97 0

